

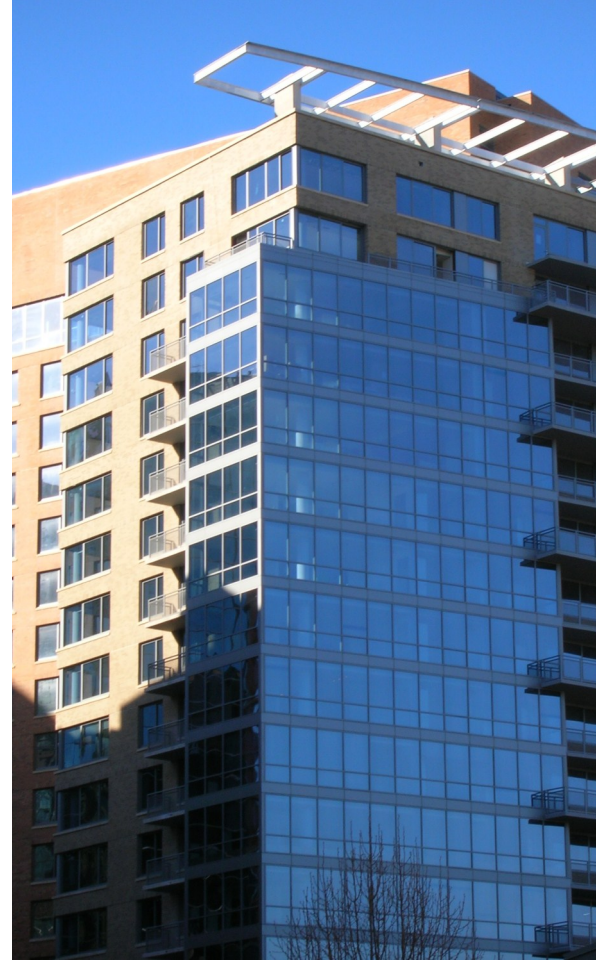
**Location**  
Arlington, VA

**Project Size**  
460,000 SF

**Completion Date**  
2006

**Owner**  
Monument Realty

**Architect**  
Shalom Baranes  
Associates



## ODYSSEY CONDOMINIUMS

### ARLINGTON, VA

The project consists of a 15 story apartment building over three levels of below-grade parking. The building has 313,000 SF residential and the remainder is parking.

Construction is post-tensioned concrete with a brick veneer on light gage metal stud backup and curtain wall. Foundations are spread footings.

The project is adjacent to an existing WMATA Metro subway rail line.